

# Parkheath

*Sold on Service*

---

**Malden Road NW5**

**£1,387 PCM (£320 Per Week)**



Ground floor 1 bedroom apartment

Wooden flooring throughout

Bright reception

A short walk to Hampstead Heath and local amenities

Study with sliding doors leading to private garden

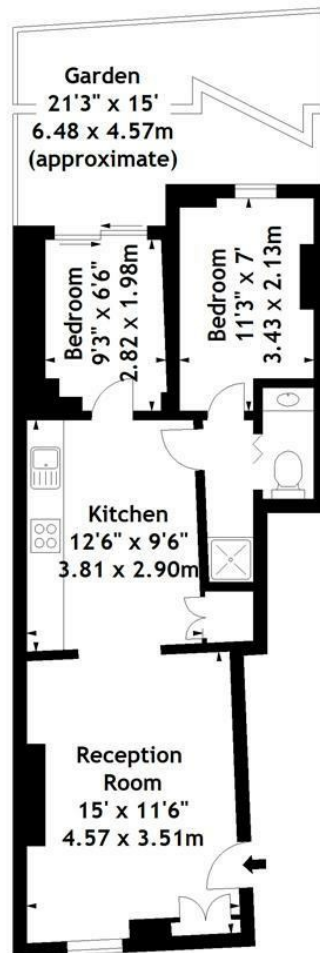
Separate shower room and separate w/c

Semi Open plan kitchen / living room

Easy access for Northern line (Belsize Park) and Overground (Gospel Oak) transport services

Kentish Town Office 020 7485 0400

Malden Road, NW5  
Approx. Gross Internal Area  
498 Sq Ft - 46.26 Sq M



Ground Floor

Measured in accordance with RICS guidelines. Every attempt is made to ensure accuracy, however all measurements are approximate. This floor plan is for illustrative purposes only and is not to scale.

© Datagraphy Ltd 2017

Photographs \* Floorplans \* Virtual Tours  
Tel: 0845 643 4401 [www.datagraphy.com](http://www.datagraphy.com)

The particulars do not constitute part of an offer or contract. The particulars, including text, photographs and plans, are for the guidance only of prospective purchasers/tenants and must not be relied upon as statements of fact. The descriptions provided therein represent the opinion of the author and whilst given in good faith should not be construed as statements of fact. Nothing in these particulars shall be deemed a statement that the property is in good condition or otherwise or that any services or facilities are in good working order. All measurements are approximate